

FORUM

A Trade and Lifestyles Publication

MOLINARO GROUP

A UNIQUE JEWEL – PARADIGM

PARADIGM

CORES LAB STRUCTURES

BUILDING A CONCRETE FUTURE WITH TOTAL PRECAST

CEDAR SPRINGS LANDSCAPE GROUP

GET AWAY EVERY DAY

BENTLEY BENTAYGA MULLINER

THE ULTIMATE LUXURY SUV

\$4.95 Cdn



forummagazine.ca



MOLINARO GROUP

PARADIGM

A unique jewel in Canada's
most attractive setting

TEXT John Reynolds

Year after year, the city of Burlington, Ontario is selected as one of the most attractive and liveable communities in Canada.

Many of the city's appealing qualities are easy to recognize at first glance. Its location on the shore of Lake Ontario, the many nature trails winding through nearby woods and meadows, and various cultural and recreational facilities all add up to a site that few other cities can match.

Now add to that list of attractions a unique development company: the Molinaro Group.

It may be surprising to suggest that a development company qualifies as a bona fide community attraction, but the Molinaro Group is a surprising company. In fact, the Molinaro family and their company have done more than help shape the city of Burlington with their many projects. They have helped define it through their support of community projects that contribute to Burlington's ranking as a desirable place to live.

The city's Joseph Brant Memorial Hospital, Performing Arts Centre, Central Library and a host of other community projects have all benefited from Molinaro support over the 50 years since the company was founded by Domenic Molinaro, Chairman. His vision and leadership have guided the management team that includes President Vince Molinaro, Executive Vice-President Robert Molinaro, and Managing Director Sam DiSanto.

Long-term Burlington residents recognize Molinaro Group as the developer of the city's most desirable high-rise condominiums. Spencer's Landing, Bunton's Wharf, The Baxter, 360 on Pearl, Strata, and The Brock all stand as examples of exceptional quality in design and execution. Nothing, however, quite matches Paradigm, the newest Molinaro residential project whose features make it unique not only in Burlington but all across Canada.

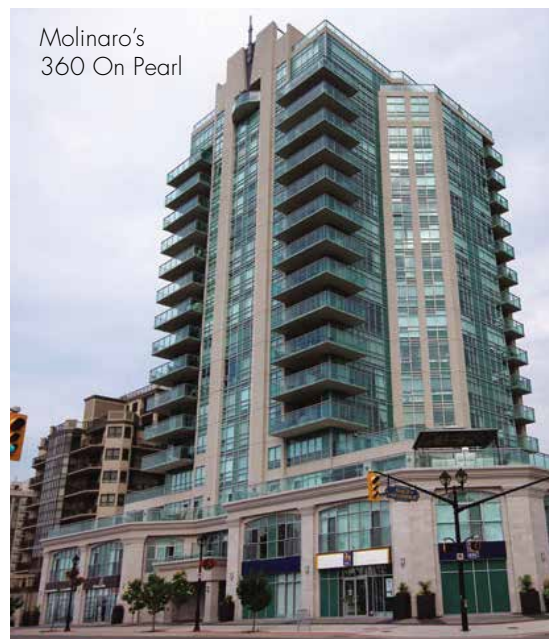
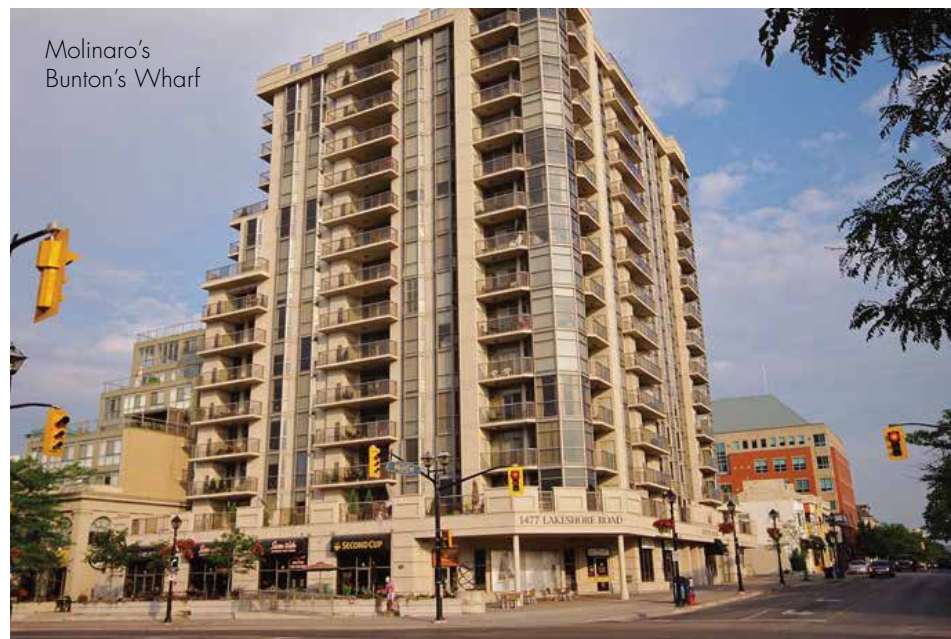


"As a midtown site, Paradigm will offer its residents access to all the things that make Burlington attractive," Vince Molinaro says.

"They will be within walking distance of the city's vibrant downtown area and the lakeshore. There are several kilometres of walking and biking trails along the shoreline, plus safe sandy beaches. The downtown area is undergoing a lot of revitalization with new shops, restaurants, parkland and much more." The city's core boasts a range of

exciting changes. Major renovations and expansion at Joseph Brant Hospital will double the facility's capacity, and the new Performing Arts Centre and Burlington Pier have lent new excitement to the area. For many people, the big deal-maker for choosing Paradigm will be its proximity

to transit service from the new Burlington GO train station. Soon to be completed, the sparkling facility will stand as one of the most attractive and efficient commuter stations of its kind. "Residents at Paradigm will step out of their building and in a few steps board their GO east to Toronto and beyond,



or west to Hamilton," Vince Molinaro explains. "I know of no other residence where you can reside in a community with so many natural attractions and have such easy access to rail travel."

With house prices in Greater Toronto soaring to stratospheric heights, and road traffic growing more congested day by day, swift commuter travel to Canada's largest city has become an essential part of life in the region. Service to and from downtown Toronto currently operate every 30 minutes, with future plans to increase the schedule to every 15 minutes throughout the day. From Toronto Union Station, riders can board directly to Pearson International Airport with scheduled service to other areas of the province.

And when their work day has ended and they arrive back in Burlington, Paradigm residents can stroll to the Lake Ontario shoreline, stopping to shop or dine along the way.

They may be content to remain at Paradigm and enjoy its many amenities. With an all-season swimming pool and integrated hot water spa, fully-equipped fitness studio, gymnasium-style basketball half-court and panoramic rooftop sky lounge, Outdoor Fitness Deck & Games Room, Paradigm serves as a major year-round attraction all on its own.



When the weather is right, residents can gather at various outdoor locations in the facility, including the outdoor party terrace, ideal for barbecues or just gathering with friends.

Or they may simply enjoy the comfort and luxury of their attractive Paradigm suite, preparing meals in their attractive kitchens and admiring the views of Lake Ontario and the Niagara



...chosen to reflect the elegant and contemporary design concept that defines Paradigm.



Escarpment from their living room windows or balcony.

"Many standard finishes and fixtures of Paradigm suites would be considered upgrades in other residences," notes Molinaro Group design consultant

Kristen Baugaard. "Visitors to the model suite are constantly amazed to discover that the European-style appliances, quartz countertops and glass enclosed showers are not extra-cost options. They were chosen to reflect the elegant and contemporary design concept

that defines Paradigm, and are used throughout the three towers."

Molinaro Group's tradition of going beyond expectations in the design and construction of their residences has been demonstrated in other ways



with Paradigm. They include the firm's policy of building green and sustainable projects that deliver lower energy costs, healthier indoor air quality, greater durability, and general peace of mind for Canadians who insist on energy efficiency and environmental protection methods.

Paradigm residents will enjoy efficient year-round comfort with individual residence temperature controls. These wide range of energy-efficient and environmental protection features has qualified Paradigm as a LEED Silver building, honouring its exceptional energy and environmental performance.

Paradigm's seemingly endless features and attractions are viewed in dramatic fashion at the Presentation Centre on Fairview just east of Brant Street in Burlington. Visitors can inspect the upscale amenities for themselves and even experience the view they'll enjoy from any of the Paradigm's suites.

For those whose career and lifestyle are tightly linked to life in the GTA, Paradigm represents the future – elegance and affordable luxury located in a walkable community offering a range of attractions unmatched anywhere else in Canada with swift and comfortable transportation to and from downtown Toronto just beyond the front door.

Add up this unique combination of qualities and it's no surprise that units are approaching Sold Out! status.



PHOTO BY ROB ANZIT

Vince Molinaro, Sam DiSanto and Robert Molinaro.

The next time someone asks "What's the best part about working in the GTA?", the answer may be, "Burlington!" And to the fortunate residents who call it home, the reason will be Paradigm by the Molinaro Group.

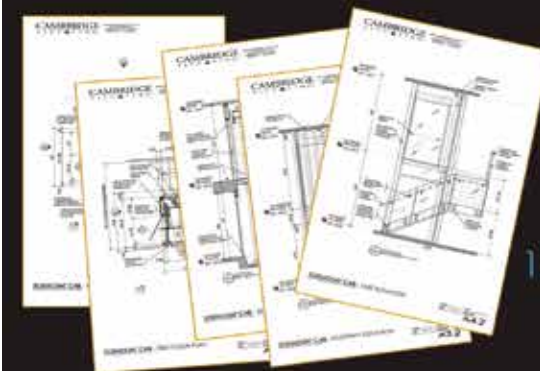
MOLINARO GROUP

Paradigm Address
2089 Fairview Street, Burlington, ON L7R 0B4

For more information
905.631.8358 info@paradigmcondos.ca
paradigmcondos.ca



Turn-key design solution for a glass elevator and enclosure.
Full CAD drawing & specification packages available, please contact us for details.



BY **CAMBRIDGE**
ELEVATING INC.

1.800.265.3579 • WWW.CAMBRIDGEELEVATING.COM
CEINFO@CAMBRIDGEELEVATING.COM